

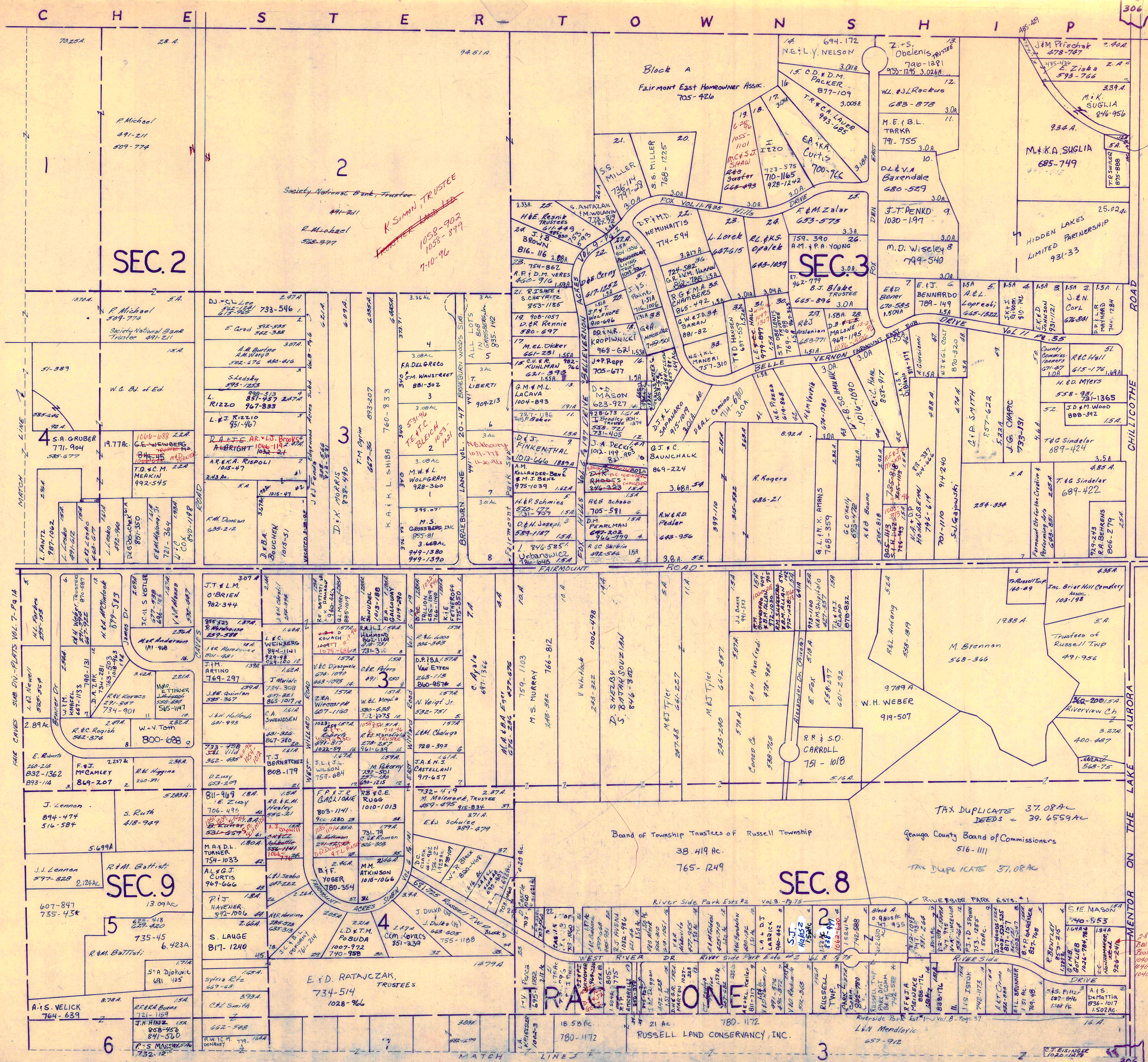
SCALE 1" = 300

* Inadequate description
 ✓ indicates survey on file with tax map dept.

RELATIVE REPRESENTATION
 JANUARY 1, 1996

A	B	C	D
E	F	G	H
I	J	K	L
M	N	O	P

RUSSELL A



SCALE 1" = 300'

✓ Indicates survey on file with tax map dept.

* Inadequate description

JANUARY 1, 1996

A	B	C	D
E	F	G	H
I	J	K	L
M	N	O	P

RUSSELL-B

RELATIVE REPRESENTATION

Board of Township Trustees of Russell Township

TAX DUPLICATE 37.08 AC
DEEDS = 39.6559 AC

Geauga County Board of Commissioners

516-1111

TAX DUPLICATE 37.08 AC

SEC. 8

TRACT ONE

RUSSELL LAND CONSERVANCY, INC.

SEC. 2

SEC. 3

SEC. 9

5

6

2

3

4

3

306

305

FAIR CAVES SUBD. PLATS VOL. 7, P. 14

MATCH LINE

MATCH LINE

MATCH LINE

CHILlicothe ROAD

MENTOR ON THE LAKE AURORA ROAD

FAIRMOUNT ROAD

WEST RIVER DR

DRIVE

DRIVE

DRIVE

DRIVE

DRIVE

DRIVE

DRIVE

DRIVE

DRIVE

DRIVE

DRIVE

DRIVE

DRIVE

DRIVE

DRIVE

DRIVE

DRIVE

DRIVE

DRIVE

DRIVE

DRIVE

DRIVE

DRIVE

DRIVE

DRIVE

DRIVE

DRIVE

DRIVE

DRIVE

DRIVE

DRIVE

DRIVE

DRIVE

DRIVE

DRIVE

DRIVE

DRIVE

DRIVE

DRIVE

DRIVE

DRIVE

DRIVE

DRIVE

DRIVE

DRIVE

DRIVE

DRIVE

DRIVE

DRIVE

DRIVE

DRIVE

DRIVE

DRIVE

DRIVE

DRIVE

DRIVE

DRIVE

DRIVE

DRIVE

DRIVE

DRIVE

DRIVE

DRIVE

DRIVE

DRIVE

DRIVE

DRIVE

DRIVE

DRIVE

DRIVE

DRIVE

DRIVE

DRIVE

DRIVE

DRIVE

DRIVE

DRIVE

DRIVE

DRIVE

DRIVE

DRIVE

DRIVE

DRIVE

DRIVE

DRIVE

DRIVE

DRIVE

DRIVE

DRIVE

DRIVE

DRIVE

DRIVE

DRIVE

DRIVE

DRIVE

DRIVE

DRIVE

DRIVE

DRIVE

DRIVE

DRIVE

DRIVE

DRIVE

DRIVE

DRIVE

DRIVE

DRIVE

DRIVE

DRIVE

DRIVE

DRIVE

DRIVE

DRIVE

DRIVE

DRIVE

DRIVE

DRIVE

DRIVE

DRIVE

DRIVE

DRIVE

DRIVE

DRIVE

DRIVE

DRIVE

DRIVE

DRIVE

DRIVE

DRIVE

DRIVE

DRIVE

DRIVE

DRIVE

DRIVE

DRIVE

DRIVE

DRIVE

DRIVE

DRIVE

DRIVE

DRIVE

DRIVE

DRIVE

DRIVE

DRIVE

DRIVE

DRIVE

DRIVE

DRIVE

DRIVE

DRIVE

DRIVE

DRIVE

DRIVE

DRIVE

DRIVE

DRIVE

DRIVE

DRIVE

DRIVE

DRIVE

DRIVE

DRIVE

DRIVE

DRIVE

DRIVE

DRIVE

DRIVE

DRIVE

DRIVE

DRIVE

DRIVE

DRIVE

DRIVE

DRIVE

DRIVE

DRIVE

DRIVE

DRIVE

DRIVE

DRIVE

DRIVE

DRIVE

DRIVE

DRIVE

DRIVE

DRIVE

DRIVE

DRIVE

DRIVE

DRIVE

DRIVE

DRIVE

DRIVE

DRIVE

DRIVE

DRIVE

DRIVE

DRIVE

DRIVE

DRIVE

DRIVE

DRIVE

DRIVE

DRIVE

DRIVE

DRIVE

DRIVE

DRIVE

DRIVE

DRIVE

DRIVE

DRIVE

DRIVE

DRIVE

DRIVE

DRIVE

DRIVE

DRIVE

DRIVE

DRIVE

DRIVE

DRIVE

DRIVE

DRIVE

DRIVE

DRIVE

DRIVE

DRIVE

DRIVE

DRIVE

DRIVE

DRIVE

DRIVE

DRIVE

DRIVE

DRIVE

DRIVE

DRIVE

DRIVE

DRIVE

DRIVE

DRIVE

DRIVE

DRIVE

DRIVE

DRIVE

DRIVE

DRIVE

DRIVE

DRIVE

DRIVE

DRIVE

DRIVE

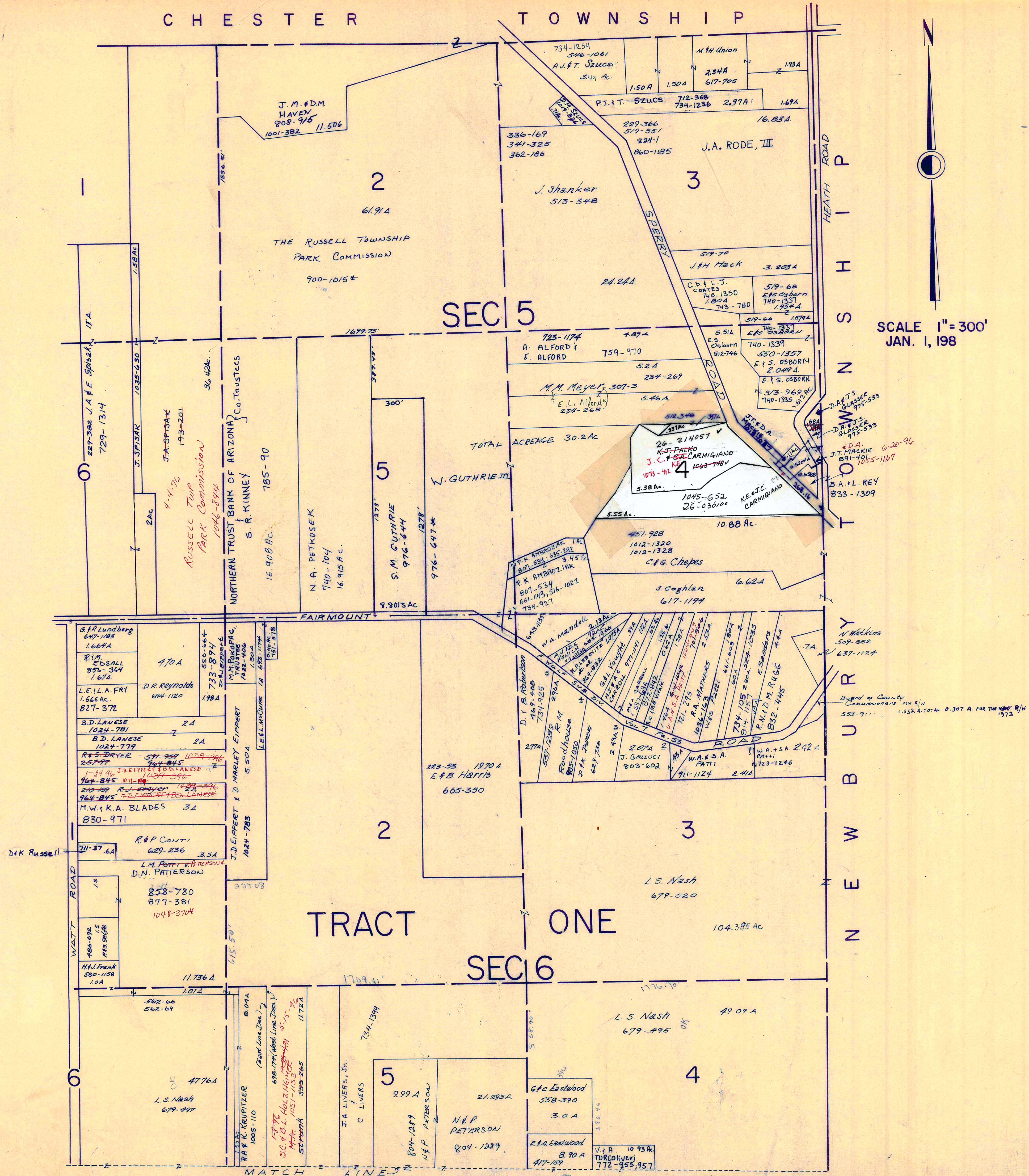
DRIVE

DRIVE

DRIVE

DRIVE

CHESTER TOWNSHIP



SCALE 1" = 300'
JAN. 1, 198

✓ indicates survey on file with tax map dept.

* Inadequate Description

JANUARY 1, 1996
RELATIVE REPRESENTATION

A	B	C
E	F	G
I	J	K
M	N	O

RUSSELL-D

SEC. 9
680-887
G.E. & L. BAKER
10 Ac.

SEC. 8
RUSSELL LAND CONSERVANCY, INC.
780-1172

SEC. 12
913-1066
L.J. LAIRLY
31.22 Ac.

SEC. 13
816-479
J.P. & L.A. MISCHEL
816-479

SEC. 14
6-2012
I. KABAY
4.551 Ac.

706-573
R.W. McDONALD
8.1 HEDGES
520-712

848-1032
G.I. TISCH
815-641

734-1340
R.L. LAMB
1.5 Ac.

6-2131
TORRENS
4.1459

780-1172
12.04 Ac.

50.06 Ac.
557 Ac.

TRACT ONE
TRACT TWO

757-1283
M.F. & L.R. NOVELLI
721-10 RT & SR BUCK

582-363
16.04 Ac.

819-336
J.A. MANDRETTI
10 Ac.

813-456
G.P. & M.G. AHEARN
813-456

894-895
E. GOTTSCHALK
2.36 Ac.

SCALE 1"=300'

*Indicates survey on file with tax map dept.

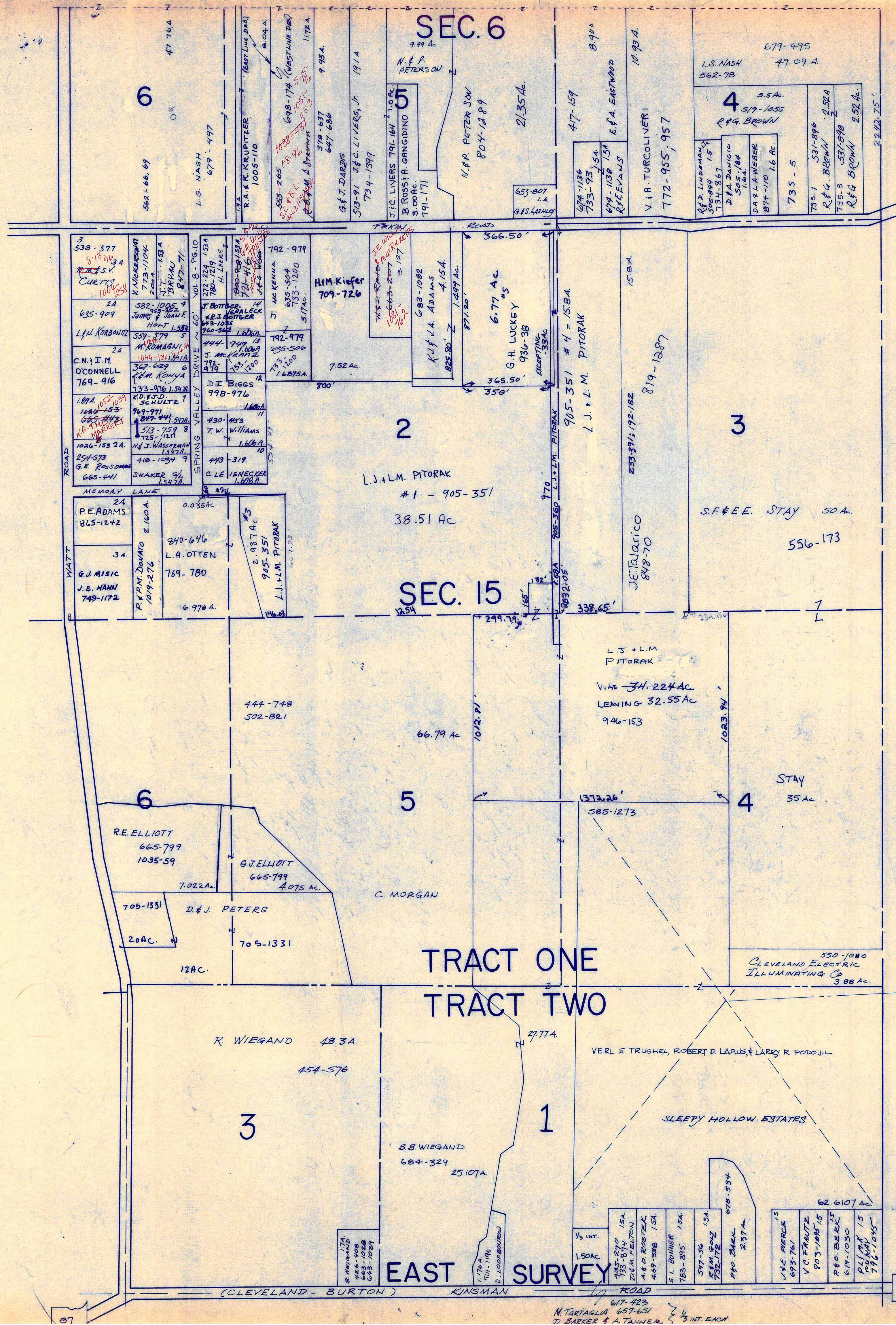
*Inadequate description

January 1, 1996
RELATIVE REPRESENTATION

Grid table with letters A through P in a 4x4 arrangement.

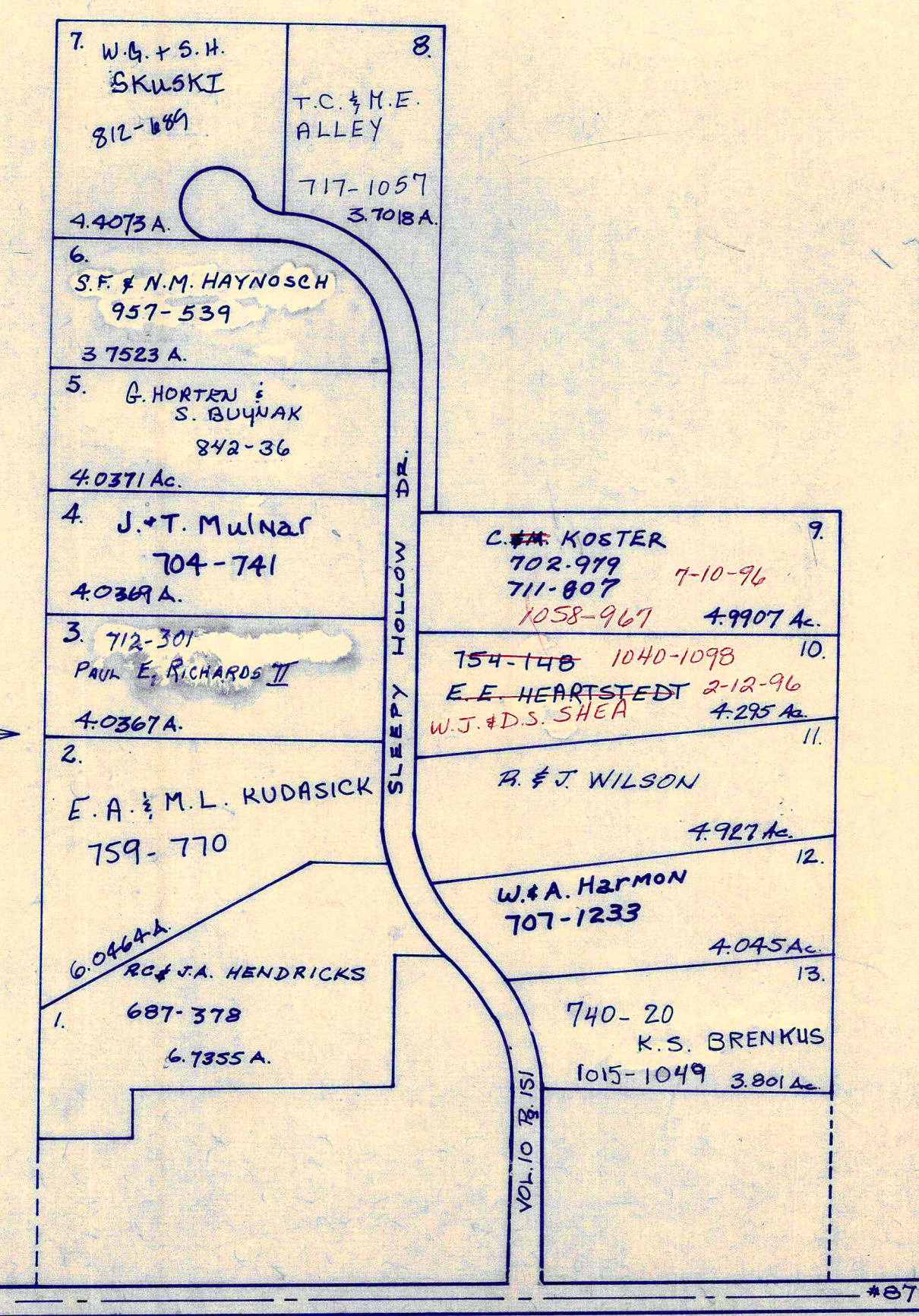
RUSSELL - F

87



SCALE = 1" = 300'
 JAN. 1, 198

P I T O R A K S O W N E R Y



✓ indicates survey on file with tax map dept.

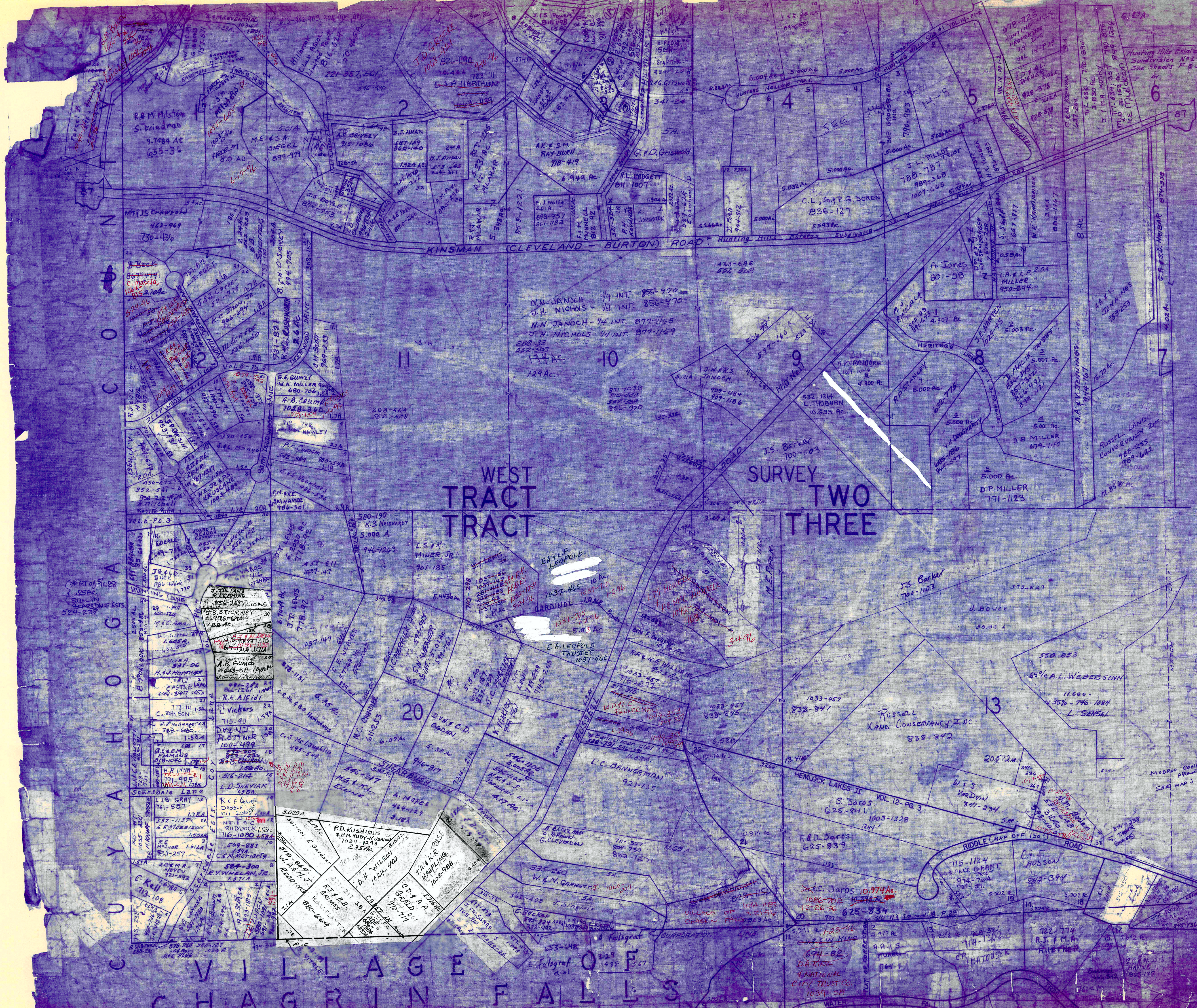
* Inadequate description

JANUARY, 1996
 RELATIVE REPRESENTATION

A	B	C	D
E	F	G	H
I	J	K	L
M	N	O	P

RUSSELL-H

67-423
 N. TARTAGLIA 657-651
 D. BARKER & A. TANNER 1/3 INT. EACH



SCALE 1"=300'

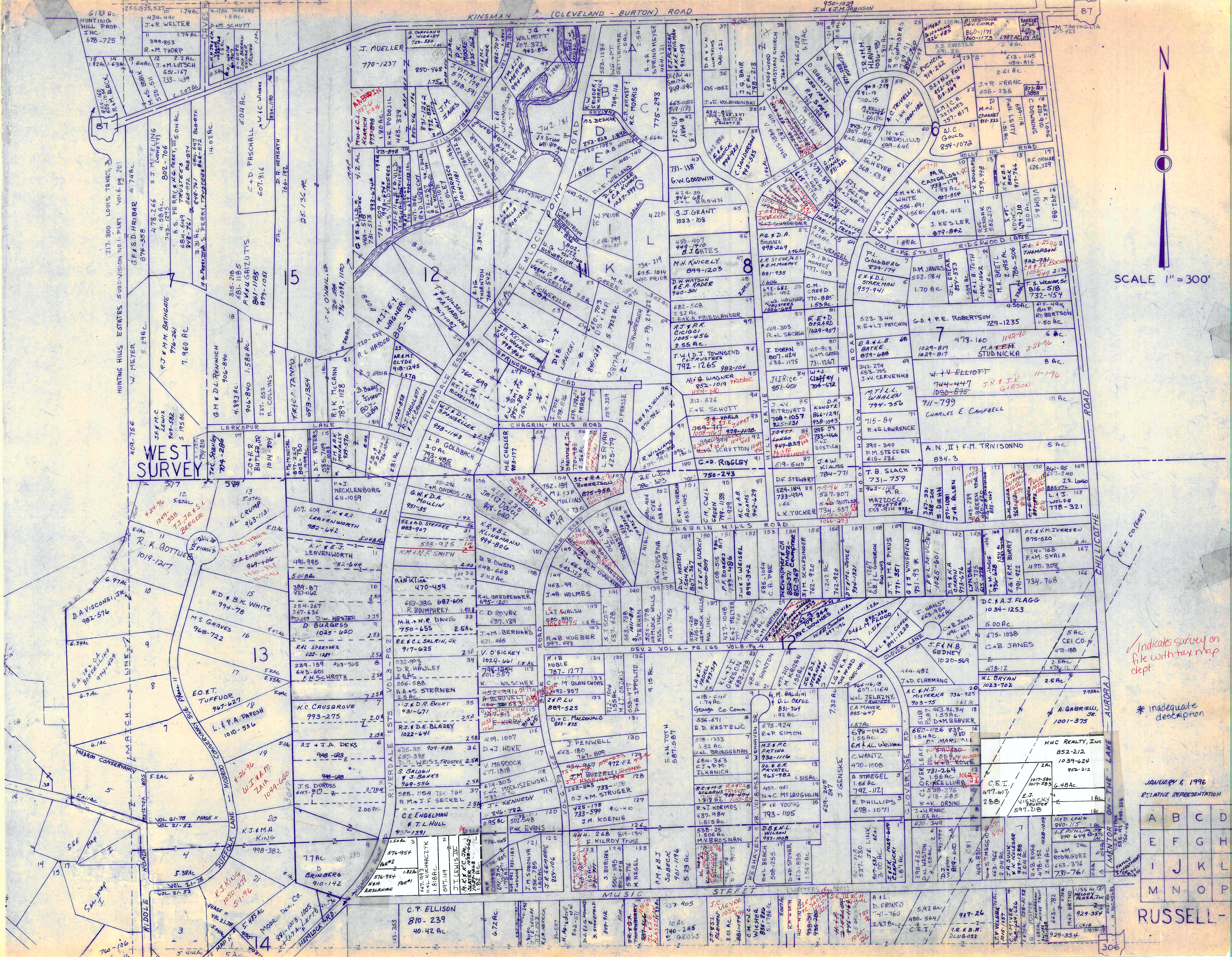
Indicates survey on file with township dept

* inadequate description

MODERN CONSERVANCY PROGRAM JANUARY, 1996
SEE MAP J RELATIVE REPRESENTATION

A	B	C	D
E	F	G	H
I	J	K	L
M	N	O	P

RUSSELL



SCALE 1" = 300'

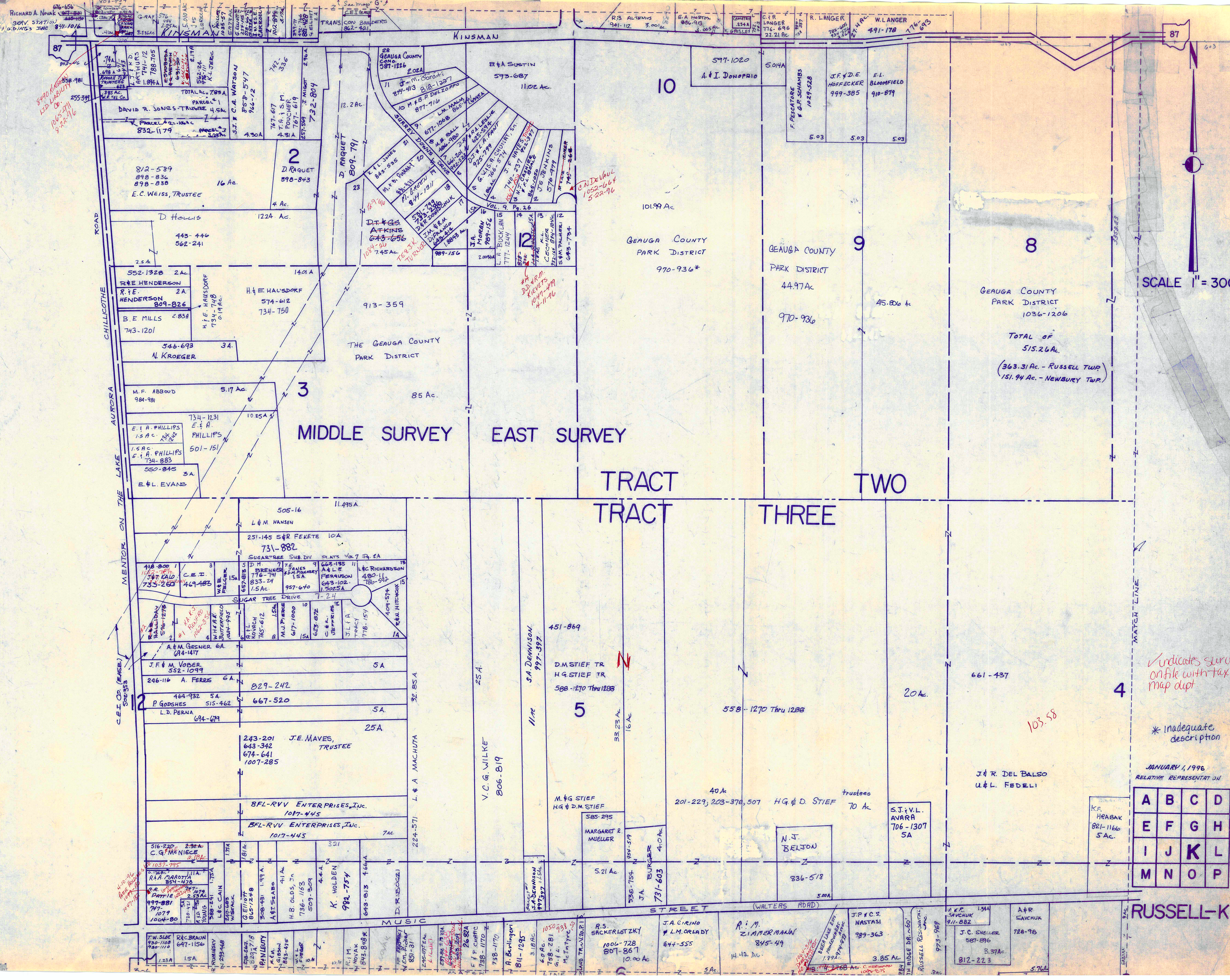
Indicates survey on file with tax map dept.

* inadequate description

JANUARY 6, 1996
RELATIVE REPRESENTATION

A	B	C	D
E	F	G	H
I	J	K	L
M	N	O	P

RUSSELL-J



8790 Acre
LTD LIABILITY
106-391
822-716

CND Vault
1059-664
522-96

4000
DIPLOMA
KIEVETS
1047-499
4-11-96

11-91
Rice
1047-10

SCALE 1" = 300'

✓ indicates surveyed on file with tax map dept

* inadequate description

JANUARY 1, 1996
RELATIVE REPRESENTATION

A	B	C	D
E	F	G	H
I	J	K	L
M	N	O	P

RUSSELL-K

TOTAL OF
515.26 Ac.
(363.31 Ac. - RUSSELL TWP)
(151.94 Ac. - NEWBURY TWP)

J & R DEL BALSIO
U & L FEDELI

S.J. V.L.
AVARA
706-1307
5A

N.Y.
BELJON
836-578

40 Ac
201-229, 203-378, 507 H.G. & D. STIEF trustees

5

D.M. STIEF TR
H.G. STIEF TR
588-1270 Thru 1288

V.C.G. WILKE
806-819

L. & A. MACHUTA
264-571

MIDDLE SURVEY EAST SURVEY

TRACT TWO

TRACT THREE

TRACT

GEAUGA COUNTY PARK DISTRICT

GEAUGA COUNTY PARK DISTRICT
970-936*

GEAUGA COUNTY PARK DISTRICT
44.97 Ac
970-936

GEAUGA COUNTY PARK DISTRICT
1036-1206

101.99 Ac

45.806 Ac

THE GEAUGA COUNTY PARK DISTRICT
85 Ac.

3

M.F. ABBOND
984-981
5.17 Ac

R. E. HENDERSON
809-826
2A

D. HOLLIS
443-444
562-241
2.5A

872-589
878-836
878-838
E.C. WEISS, TRUSTEE
16 Ac.

2

D. RAQUET
898-843
4 Ac.

742-617
742-619
732-804
4.30A

DAVID R. JONES TRUSTEE
832-1179
4.5A

742-617
742-619
732-804
4.30A

742-617
742-619
732-804
4.30A

676-656
380V. STATION
A.D. BIRDS SONS

742-617
742-619
732-804
4.30A

742-617
742-619
732-804
4.30A

742-617
742-619
732-804
4.30A

742-617
742-619
732-804
4.30A

742-617
742-619
732-804
4.30A

742-617
742-619
732-804
4.30A

742-617
742-619
732-804
4.30A

742-617
742-619
732-804
4.30A

742-617
742-619
732-804
4.30A

742-617
742-619
732-804
4.30A

742-617
742-619
732-804
4.30A

742-617
742-619
732-804
4.30A

742-617
742-619
732-804
4.30A

742-617
742-619
732-804
4.30A

742-617
742-619
732-804
4.30A

742-617
742-619
732-804
4.30A

742-617
742-619
732-804
4.30A

742-617
742-619
732-804
4.30A

742-617
742-619
732-804
4.30A

742-617
742-619
732-804
4.30A

742-617
742-619
732-804
4.30A

742-617
742-619
732-804
4.30A

742-617
742-619
732-804
4.30A

742-617
742-619
732-804
4.30A

742-617
742-619
732-804
4.30A

742-617
742-619
732-804
4.30A

742-617
742-619
732-804
4.30A

742-617
742-619
732-804
4.30A

742-617
742-619
732-804
4.30A

742-617
742-619
732-804
4.30A

742-617
742-619
732-804
4.30A

742-617
742-619
732-804
4.30A

742-617
742-619
732-804
4.30A

742-617
742-619
732-804
4.30A

742-617
742-619
732-804
4.30A

742-617
742-619
732-804
4.30A

742-617
742-619
732-804
4.30A

742-617
742-619
732-804
4.30A

742-617
742-619
732-804
4.30A

742-617
742-619
732-804
4.30A

742-617
742-619
732-804
4.30A

742-617
742-619
732-804
4.30A

742-617
742-619
732-804
4.30A

742-617
742-619
732-804
4.30A

742-617
742-619
732-804
4.30A

742-617
742-619
732-804
4.30A

742-617
742-619
732-804
4.30A

742-617
742-619
732-804
4.30A

742-617
742-619
732-804
4.30A

742-617
742-619
732-804
4.30A

742-617
742-619
732-804
4.30A

742-617
742-619
732-804
4.30A

742-617
742-619
732-804
4.30A

742-617
742-619
732-804
4.30A

742-617
742-619
732-804
4.30A

742-617
742-619
732-804
4.30A

742-617
742-619
732-804
4.30A

742-617
742-619
732-804
4.30A

742-617
742-619
732-804
4.30A

742-617
742-619
732-804
4.30A

742-617
742-619
732-804
4.30A

742-617
742-619
732-804
4.30A

742-617
742-619
732-804
4.30A

742-617
742-619
732-804
4.30A

742-617
742-619
732-804
4.30A

742-617
742-619
732-804
4.30A

742-617
742-619
732-804
4.30A

742-617
742-619
732-804
4.30A

742-617
742-619
732-804
4.30A

742-617
742-619
732-804
4.30A

742-617
742-619
732-804
4.30A

742-617
742-619
732-804
4.30A

742-617
742-619
732-804
4.30A

742-617
742-619
732-804
4.30A

742-617
742-619
732-804
4.30A

742-617
742-619
732-804
4.30A

742-617
742-619
732-804
4.30A

742-617
742-619
732-804
4.30A

742-617
742-619
732-804
4.30A

742-617
742-619
732-804
4.30A

742-617
742-619
732-804
4.30A

742-617
742-619
732-804
4.30A

742-617
742-619
732-804
4.30A

742-617
742-619
732-804
4.30A

742-617
742-619
732-804
4.30A

742-617
742-619
732-804
4.30A

742-617
742-619
732-804
4.30A

742-617
742-619
732-804
4.30A

742-617
742-619
732-804
4.30A

742-617
742-619
732-804
4.30A

742-617
742-619
732-804
4.30A

742-617
742-619
732-804
4.30A

742-617
742-619
732-804
4.30A

742-617
742-619
732-804
4.30A

742-617
742-619
732-804
4.30A

742-617
742-619
732-804
4.30A

742-617
742-619
732-804
4.30A

742-617
742-619
732-804
4.30A

742-617
742-619
732-804
4.30A

742-617
742-619
732-804
4.30A

742-617
742-619
732-804
4.30A

742-617
742-619
732-804
4.30A

742-617
742-619
732-804
4.30A

742-617
742-619
732-804
4.30A

742-617
742-619
732-804
4.30A

742-617
742-619
732-804
4.30A

742-617
742-619
732-804
4.30A

742-617
742-619
732-804
4.30A

742-617
742-619
732-804
4.30A

742-617
742-619
732-804
4.30A

742-617
742-619
732-804
4.30A

742-617
742-619
732-804
4.30A

742-617
742-619
732-804
4.30A

742-617
742-619
732-804
4.30A

742-617
742-619
732-804
4.30A

742-617
742-619
732-804
4.30A

742-617
742-619
732-804
4.30A

742-617
742-619
732-804
4.30A

742-617
742-619
732-804
4.30A

742-617
742-619
732-804
4.30A

742-617
742-619
732-804
4.30A

742-617
742-619
732-804
4.30A

742-617
742-619
732-804
4.30A

742-617
742-619
732-804
4.30A

742-617
742-619
732-804
4.30A

742-617
742-619
732-804
4.30A

742-617
742-619
732-804
4.30A

742-617
742-619
732-804
4.30A

742-617
742-619
732-804
4.30A

742-617
742-619
732-804
4.30A

742-617
742-619
732-804
4.30A

742-617
742-619
732-804
4.30A

742-617
742-619
732-804
4.30A

742-617
742-619
732-804
4.30A

742-617
742-619
732-804
4.30A

742-617
742-619
732-804
4.30A

742-617
742-619
732-804
4.30A

742-617
742-619
732-804
4.30A

742-617
742-619
732-804
4.30A

742-617
742-619
732-804
4.30A

742-617
742-619
732-804
4.30A

742-617
742-619
732-804
4.30A

742-617
742-619

87

87

A.S. STACHOWSKI
945-1208
1019-970
1019-973
11.18 Ac

AM. SOCIETY
OF METALS
477-252
409-776
1036-1206
3.95 Ac

AMERICAN SOCIETY
OF METALS
477-252
409-776
1036-1206
41.05 Ac

7

4

2

GEORGIA COUNTY PARK DISTRICT
1036-1206
TOTAL OF
515.26 Ac.
(363.31 Ac. - RUSSELL TWP.
151.94 Ac. - NEWBURY TWP.)

SCALE 1"=300'



EAST SURVEY

TRACT
TRACT

TWO
THREE

312-587 G.G. Schierger
MUSIC ST. PROPERTIES, INC.
844-698

A.A. Abell III
700-452
2.0 Ac.

4

A. C. ABELL
768-634
47.60 Ac.

A.A. Abell
605-223
65.4 Ac.

700-79
602A
4.46
55
Sensate

713-761
327
R. Kewinger

527-57
999-1082
751-1158
999-1085
B.A. Deuro & B.J. Deuro

518-1001
M. A. ALLEN
1530 A.

593-438
R.C. Baumgardner

D.P. Joyce
849-559

950-1182
2
4.00
P. H. HARRIS
448-6
202-107

824-822
C. H. HARRIS
781-61

744-1128
10.40
123-853
W. H. LINDVIG
206-01

515-157
HUBBARD WOODS

HUBBARD WOODS
815-157
5.00 Ac.

575-122
C. L. HOOPER
755-122
1032-150

520-740
J.M. ALICK

859-864
859-866
R. J. ALICK

11807
WINDING WOODS
MAY, INC.
428-857

574-213
574-213
574-213

855-567
T. D. SLOOF

* Inadequate description

RELATIVE REPRESENTATION
JANUARY 1, 1996

A	B	C	D
E	F	G	H
I	J	K	L
M	N	O	P

Indicates survey on file with tax map dept.

RUSSELL-L

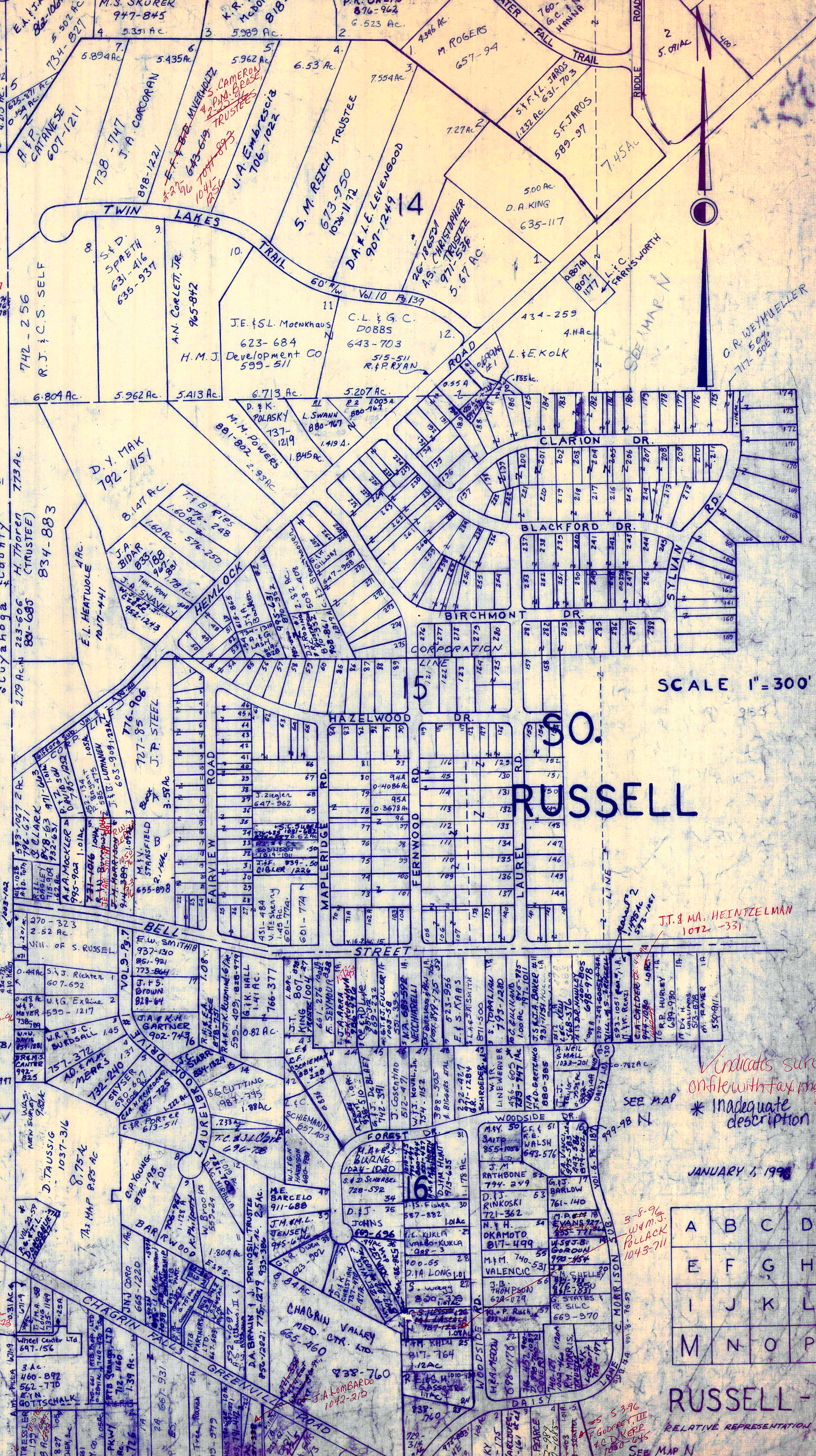
CHAGRIN HEIGHTS SUBDIVISION VOL. 3 - PG. 5-6 & 17-18 PLATS

Table listing property owners and addresses for Chagrin Heights Subdivision, including names like R.W. L. Kondas, E. Unkrich, and S. Olland.

CHAGRIN FALLS

Table listing property owners and addresses for Chagrin Falls, including names like J.H. Foster, J. Schmidt & P. Schmidt, and J. Nelson.

TRACT THREE



SCALE 1"=300'

RUSSELL

JANUARY 1, 1998

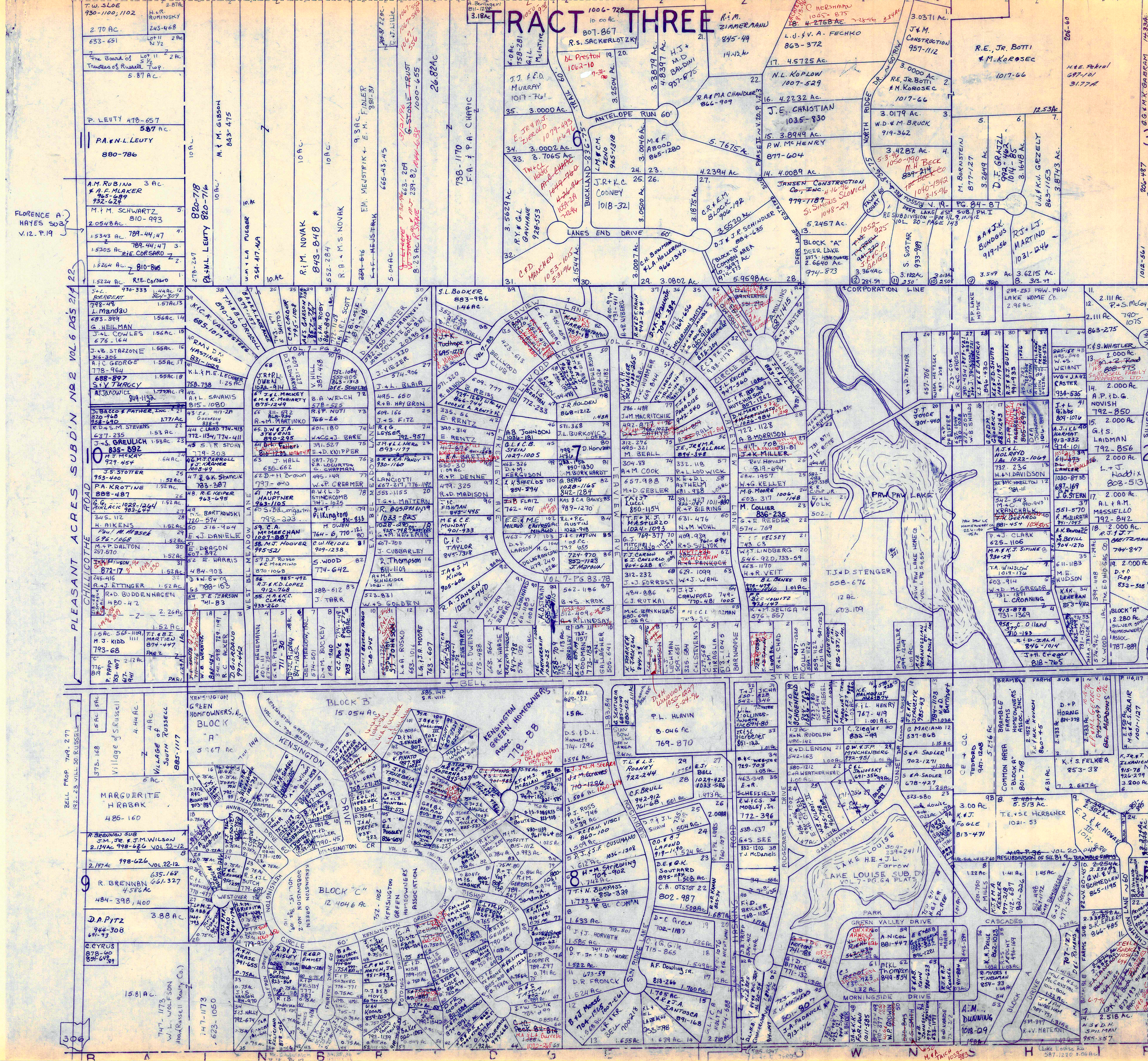
Grid reference table with letters A through O and numbers 1 through 16.

RUSSELL - M

RELATIVE REPRESENTATION

SEE MAP N

TRACT THREE



PLEASANT ACRES SUBD'Y NO 2 VOL 6 PGS 214-222
CHILlicothe ROAD
FLORENCE A. HAYES SOB, V.12, P.19
MARGUERITE HRASAK 486-160
D.A. PITZ 388 AC
D. CYRUS 878-60
R. BRENNAN 484-398, 400
J.M. JR. & J.M. WILSON 8114 AC 988-626 VOL 2212
Village of Russell
Village of South Russell
Village of Kensington
Village of Green Valley
Village of Lake Louise
Village of Cascades
Village of Morningside
Village of Park
Village of Kensington
Village of Green Valley
Village of Lake Louise
Village of Cascades
Village of Morningside
Village of Park

M.E. & J.L. FARROW
Lake Louise
Subd. Vol. 7, Pg. 64

Lot	Vol.	Pg.	REV.	MATERNI
1	589	271	G.M. YAEGER	
2	752	472	R.C. GONBERG	
3	707	127	DEL. ROMAN	
4	477	547	G.C. GOODRICH	
5	578	933	G.A. BAMBERGER	
6	627	336	K.F. MAKESLER 977-218	
7	507	750	P.H. MILLS	
8	843	284	H. BRVNER 809-1319	
9	678	427	S.R. & A. SADLER 677-949	
10	702	1271	S.A. Sadler	
11	537	868	G. MARIANO 868-941	
12	781	1103	N.E.D. BARNHART	
13	813	471	K. & J. FOGLE	

SCALE 1"=300'
JAN. 1, 1996

Lot	Vol.	Pg.	REV.	STANCZYK
14	985	47	S.E. R. STANCZYK	
15	578	928	A.K. MALMQUIST	
16	174	237	E.R. MDRONEY TRUSTEES; 997-389	
17	523	580	M.M. RIEGEL	
18	804	783	R.W.M.D. SCHOENFELD	
19	880	112	R.N. RUDOLPH	
20	542	163	RED LENOVA	
21	580	1212	W.C. WEATHERHEAD	
22	784	101	LAKE LOUISE SUB	
23	784	101	LAKE LOUISE SUB	
24	562	926	S.K. HOLLIES	
25	641	358	K.E.L.A. JANSKI	
26	11	11	"	
27	11	11	"	
28	942	851	C.W. & P. MUNCHENBERG	
29	822	94	C. ZIEGLER	
30	550	828	T. & J. JICHA	
31	542	344	"	
32	851	122	T.E. & S.E. HERBENER	
33	729	703	B.A. WEBSTER	
34	443	348	E. SCHEFFELD	
35	772	396	R.W. & S. MOBLEY, JR.	
36	538	637	G.G. & S. SEE	
37	832	1202	T.J. McDANIELS	
38	114	114	"	
39	574	412	J.B. TRIPP	
40	814	1049	D.L. & N. COOPERIDER	
41	741	183	G.W.D. BITHER	
42	771	132	E.J. MATHEWS	
43	801	807	E.J. COLEMAN	
44	538	289	H.L. BAKER 944-740	
45	824	1239	C. HANSON 933-116	
46	686	260	C. HANSON 933-116	
47	410	377	W.A. GODWIN	
48	520	843	A.G. SMITH	
49	133	1747	H.E.B. JOHNSON TRUSTEES	
50	231	262	A.D. KRAUSE	
51	344	1091	C.D. STEPHENS 977-899	
52	854	33	R. MYERS & T. NEWMAN	
53	494	169	R.S. FEUCHT	
54	862	1023	I.G. PAYNE	
55	643	389	H.D. MARRA	
56	316	502	E. GOTTSCHALK	
57	881	447	A. NICOL	
58	882	486	J.V. RIEHL	
59	538	723	C.S. REDDY TRUSTEES (677-1100, 674-1100)	
60	849	534	M.E.L. THOMPSON	
61	980	623	S.A. & B. KOHN	
62	64	64	"	
63	754	1011	H.G. & F.R. DeRee	
64	67	67	"	
65	69	69	"	

W. BERGMAN
K.C. HENRY BERGMAN
900-519

* Inadequate description
✓ indicates survey on file with tax map dept.

A	B	C	D
E	F	G	H
I	J	K	L
M	N	O	P

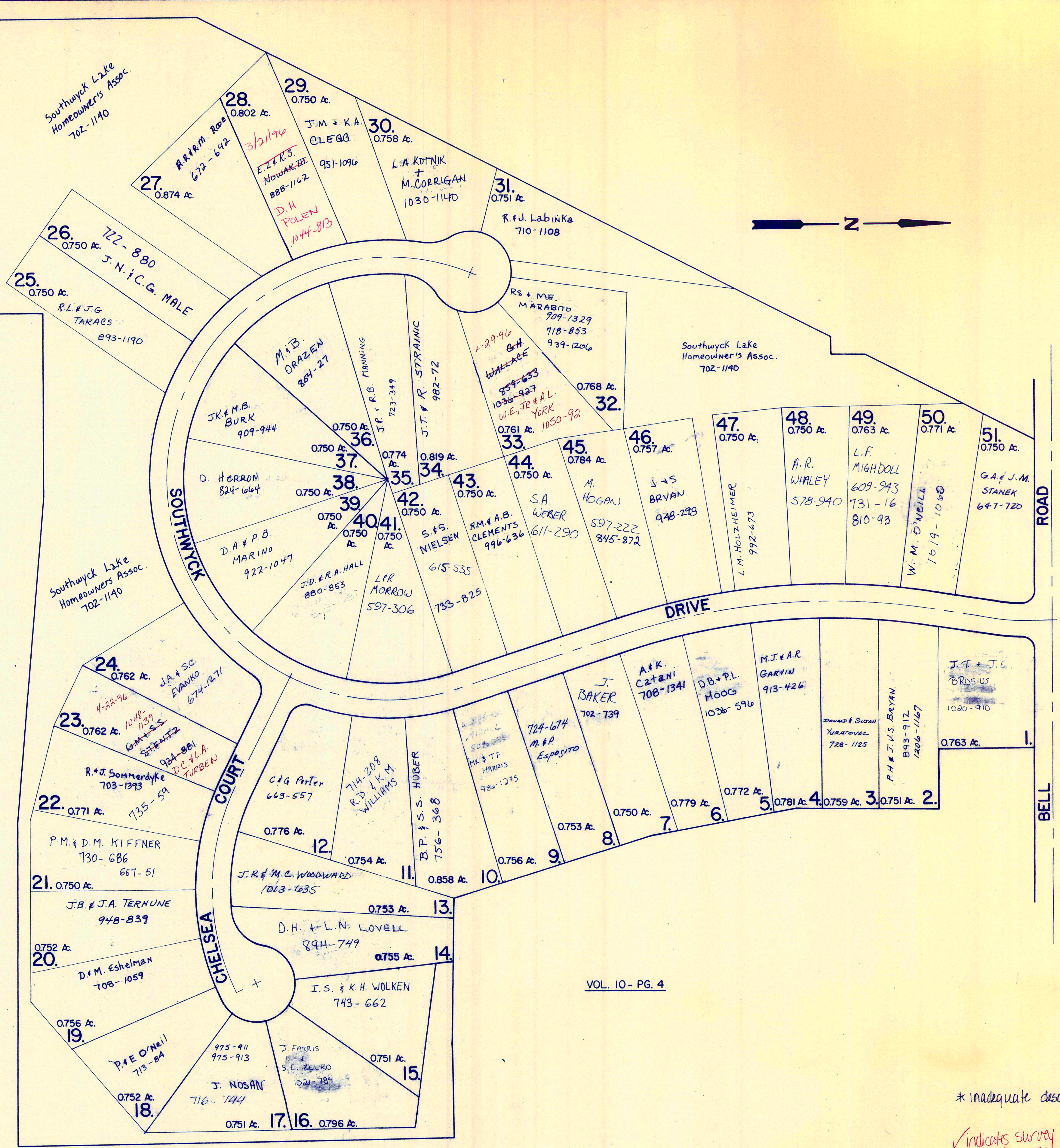
RUSSELL-0
RELATIVE REPRESENTATION

VILLAGE OF SOUTH RUSSELL
WASTE WATER TREATMENT
PLANT SITE
5.440 Ac.
(0.29 Ac BAINBRIDGE TWP.)

BAINBRIDGE TOWNSHIP
RUSSELL TOWNSHIP

VOL. 9 - PG. 101

SHEERBROOK ACRES



VOL. 10 - PG. 4

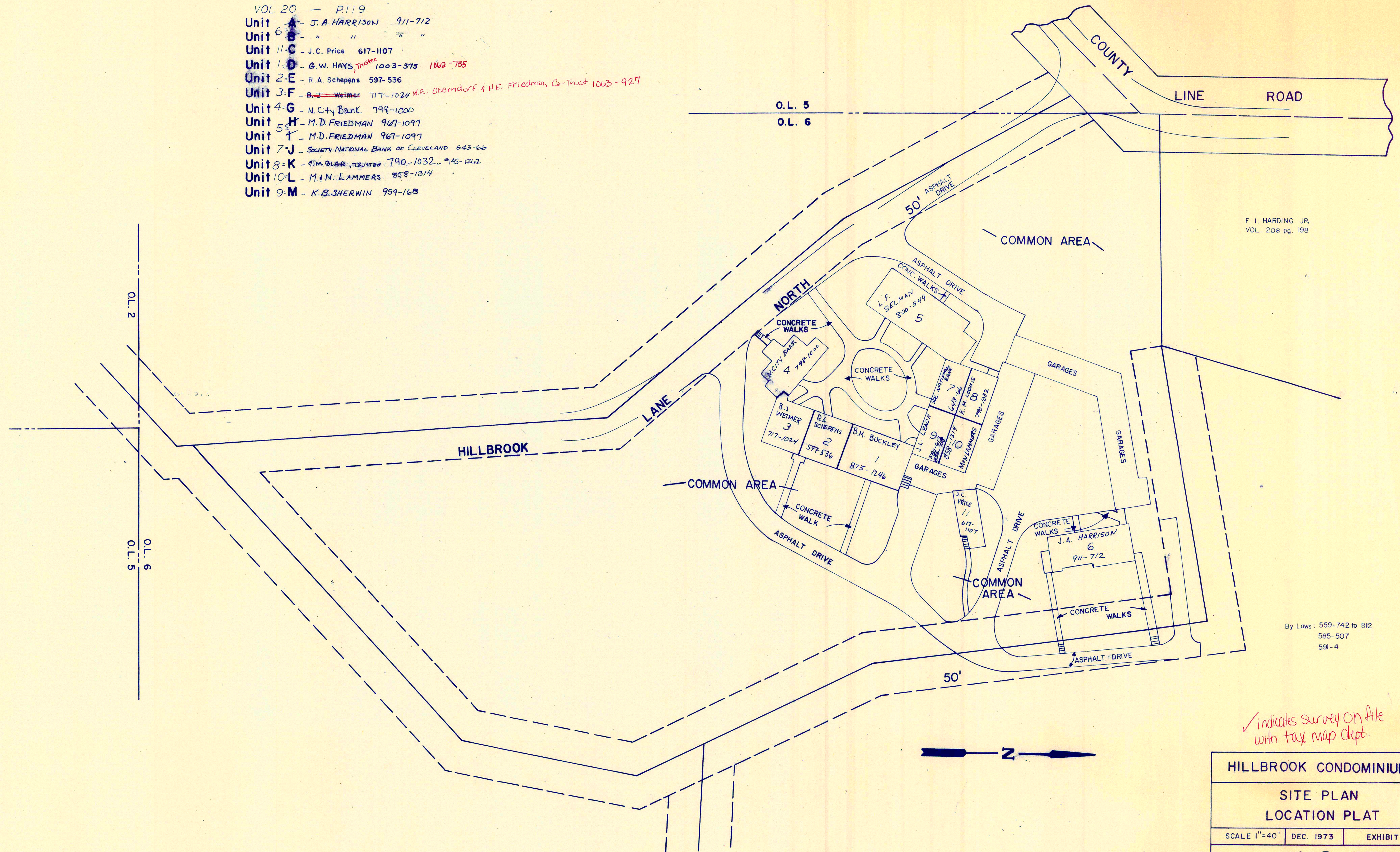
SHEERBROOK ACRES NUMBER 2

JAN. 1, 1996

* inadequate description
✓ indicates survey on file with tax map dept.

AMENDED
HILLBROOK CONDOMINIUM

- VOL 20 - P.119
- Unit A - J.A. HARRISON 911-712
 - Unit B - " " " "
 - Unit C - J.C. Price 617-1107
 - Unit D - G.W. HAYS, Trustee 1003-375 1062-755
 - Unit E - R.A. Schepens 597-536
 - Unit F - B.J. Weimer 717-1024 W.E. Oberndorf & H.E. Friedman, Co-Trust 1063-927
 - Unit G - N. City Bank 799-1000
 - Unit H - M.D. FRIEDMAN 967-1097
 - Unit I - M.D. FRIEDMAN 967-1097
 - Unit J - SOCIETY NATIONAL BANK OF CLEVELAND 643-66
 - Unit K - KIM BLAIR, Trustee 790-1032 945-1202
 - Unit L - M. & N. LAMMERS 858-1314
 - Unit M - K.B. SHERWIN 959-168



F. I. HARDING JR.
VOL. 208 pg. 198

By Laws: 559-742 to 812
585-507
591-4

✓ indicates survey on file with tax map dept.

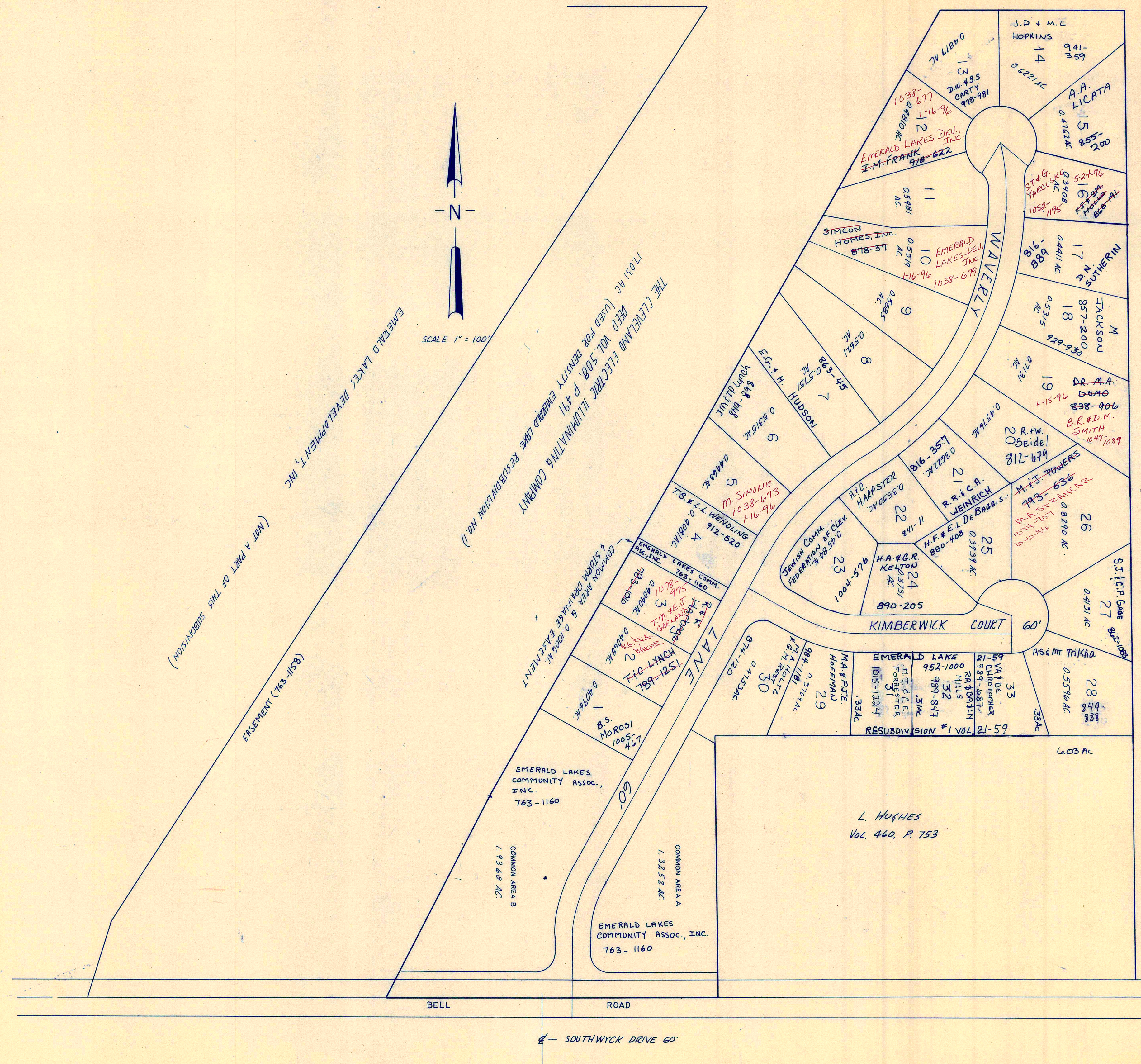
HILLBROOK CONDOMINIUM		
SITE PLAN		
LOCATION PLAT		
SCALE 1"=40'	DEC. 1973	EXHIBIT B
14 - R RUSSELL		

Recorded Vol. 10 pg. 39
AMENDED VOL 20 - P.119 8-11-92

JAN. 1, 1996

RELATIVE REPRESENTATION
* Inadequate description

T & T CONSTRUCTION Co.
Vol. 635, P. 600



Lot No.	Vol. Pg.	Date	Vol. Pg.	Date
1			40	
2			41	
3			42	
4			43	FRONTIER LAND LTD. II 969-70 1-12-94
5			44	" " " " " " " "
6			45	" " " " " " " "
7			46	W. L. P. CHRISTIANSON 1030-607 12-18-95
8	B. W. FIALKO, TRUSTEE	955-282 9-28-93	47	D. S. BUILDERS 999-35 10-31-94
9	P. A. BASISTA	955-284 9-28-93	48	G. A. FRATAN TONIO 1015-150 5-18-95
10	T. M. & C. A. BASISTA	955-286 9-28-93	49	" " " " " " " "
11	S. S. BLDG. REALTY Co.	952-990 9-2-93	50	" " " " " " " "
12	S. S. BLDG. REALTY Co.	952-990 9-2-93	51	" " " " " " " "
13			52	" " " " " " " "
14			53	" " " " " " " "
15			54	" " " " " " " "
16			55	" " " " " " " "
17			56	" " " " " " " "
18			57	" " " " " " " "
19	W. C. & P. C. HATCH	1017-424 6-9-95	58	" " " " " " " "
20			59	" " " " " " " "
21			60	" " " " " " " "
22	A. G. & M. N. HARRIS	1002-325 12-5-94	61	" " " " " " " "
23	J. W. & J. A. BAUER	995-385 4-26-94		
24	A. M. POIRSON	1027-1077 9-15-95		
25	R. A. & L. V. KOPEK	1027-1028 9-15-95		
26	J. L. & E. R. COLLINS	1027-1073 11-25-94		
27	J. S. GIDDEON	1002-71 11-28-94		
28	E. D. SCHWARTZ-BIDDEON			
29				
30				
31				
32	S. S. BLDG. REALTY Co.	1038-621 1-16-96		
33	" " " " " " " "			
34	" " " " " " " "			
35	" " " " " " " "			
36	" " " " " " " "			
37	" " " " " " " "			
38	" " " " " " " "			
39	" " " " " " " "			

EMERALD LAKE
SUBDIVISION NO. 1
VOL. 15 - PG. 107, 108 &
RESUBDIVISION NO. 1
VOL. 15 - PG. 134, 135

1" = 100'

JANUARY 1, 1996

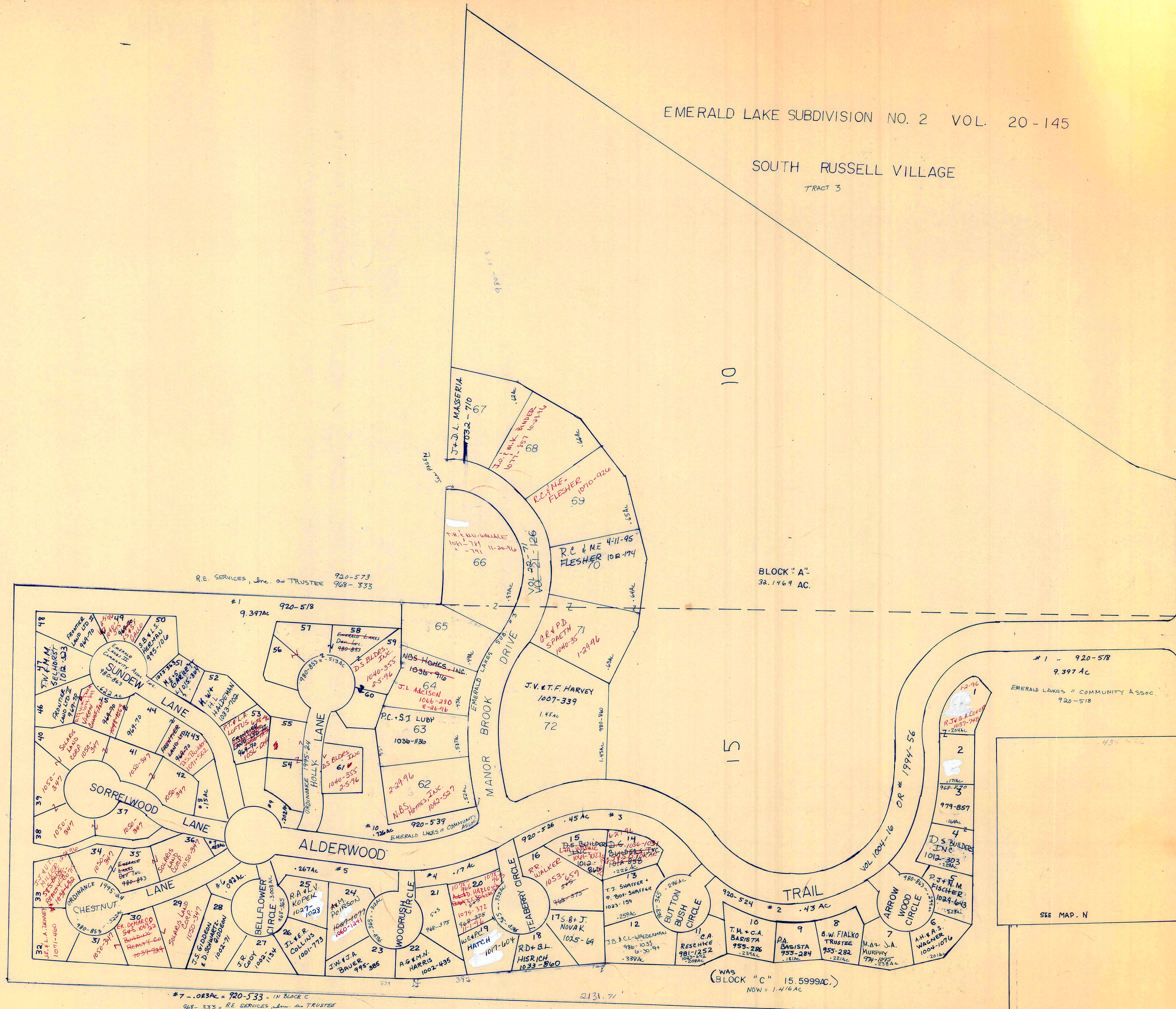
/ indicates survey on file with taxmap dept.

* inadequate description

EMERALD LAKE SUBDIVISION NO. 2 VOL. 20-145

SOUTH RUSSELL VILLAGE

TRACT 3



60

10

15

BELL ROAD

#7 - .023AC = 920-533 - IN BLOCK C
 968-335 = R.E. SERVICES, Inc. on TRUSTEE
 968-361 = EMERALD LAKES DEV. Inc.
 968-365 = EMERALD LAKES II COMMUNITY ASSOC. Inc.
 980-853 = Emerald Lakes Dev. Inc.
 980-863 = Emerald Lakes II Community Assn. Inc.

(WAS BLOCK "C" 15.5999AC.)
 NOW = 1.476 AC

SCALE 1" = 100' JANUARY 1, 1996
 RELATIVE REPRESENTATION
 CK. SUBDIVISION PLAT VOL. 20 - Pg. 145

✓ indicates survey on file with tax map dept.

10